

WASHINGTON UNION HIGH SCHOOL



CAREER PATHWAY HANDBOOK

2021-2022

WUHS Vision Statement

Great futures begin at Washington Union High School, a place where all students are educated and empowered for success.

WUHS Mission Statement

All Washington Union High School Graduates will be:

Academically Successful

Students will demonstrate a connection between education and life by using comprehensive skills in reading, writing, oral communication, mathematics and critical thinking to solve personal, community and global problems. By doing so, each student will leave WUHS with skills needed to succeed in college and/or career.

Responsible Citizens

Students will demonstrate: positive character traits that contribute to the quality of the school and community, an understanding of world viewpoints, the interpersonal skills necessary to work collaboratively in a diverse setting.

Part of an Engaged Campus

Students, staff and parents work together to promote membership in the classroom, athletics, campus clubs, extra-curricular activities and leadership teams to strengthen the campus culture.

Welcome to Washington Union High School!

We at Washington Union truly believe rigor, relevance, and relationships are the cornerstones of a quality comprehensive high school education. To support that, we will provide students the opportunity to participate in a Career Technical Education (CTE) Pathway. Students will build strong relationships with their teacher and cohort of students. Furthermore, by working in a CTE Pathway, students will participate in relevant learning experiences that will prepare them for college and/or a career.

A CTE Pathway is a sequence of three or more CTE courses within a student's area of career interest. Pathways are designed to connect high school classes to college, industry certifications, and/or a career. While in high school, students will have the opportunity to acquire free technical skills training in the career field he/she is interested in. Students will learn valuable technical skills and "soft" skills making them employable regardless of the field of study they actually end up in. Three of our pathways, Wonderful Agriculture Career Prep Academy, Floral Design and our Health Institute, have dual enrollment opportunities with State Center Community College. All CTE courses support rigorous state standards and ensure students are learning rigorous academic skills, especially in English Language Arts and Mathematics.

Wherever your journey on the road of education takes you, we want you to end up in a chosen career. Some students' journey on this road will end with a PhD, some will graduate high school and enter the workforce, and most will end up somewhere in between. The important thing to remember is that you will require knowledge, skills, and abilities to be successful in your future endeavors.

At Washington Union High School, we look forward to cultivating achievement and growing futures.

John L. Sherron
Principal



Health Science & Medical Technology

The standards in this sector represent the academic and technical skills and knowledge students need to pursue a full range of career opportunities in health science and medical technology, from entry level to management as well as technical and professional career specialties. The standards describe what workers need to know and be able to do to contribute to the delivery of safe and effective health care. The career pathway is Patient Care and the standards for this path build on and continue the anchor standards with more complexity, rigor, and career specificity.

Patient Care

Intro to Allied Health

Medical Terminology

ROP Allied Health and Medical Wellness

ROP Sports Medicine



CAREERS

Athletic Trainer
Physical Therapist
Medical Assisting
EMT
CNA
Nursing



Instructor: Tony Pena ~ tony.pena@wusd.ws



Public Services Law and Justice Institute

A public service is one that is provided by government to its citizens, either directly or through the financing of another entity to provide that service. Careers in public service are unique because they center on challenging issues that define the public agenda and involve the provision of vital services to the public—from local to international levels. Public service professions offer many career opportunities, including the following career pathway: Public Safety. Students engage in an instructional program that integrates academic and technical preparation and focuses on career awareness, career exploration, skill preparation in the industry, and preparation for post-secondary education and training. Knowledge and skills are learned and applied within a sequential, standards-based pathway program that integrates classroom, laboratory, and project-and-work-based instruction. Standards in this sector are designed to prepare students for technical training, postsecondary education, and entry-level employment.

Public Services

Introduction to
Criminology

Practical
Law/Emergency
Response

Criminal
Investigation - CSI

ROP Criminal
Justice



CAREERS

Correctional Officer

Probation Officer

Law Enforcement Officer

Loss Prevention Specialist

Military Service



*Instructor: David Maynez
david.maynez@wusd.ws*



Agriculture & Natural Resources Wonderful Ag Career Prep

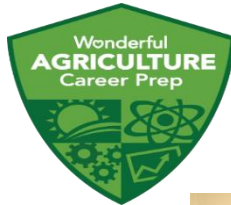
The Wonderful Ag Career Prep pathway is an Ag Mechanics-based program that allows for students to complete a series of college courses that lead to an Associate degree and certification in Ag Mechanics through Reedley College. Working in conjunction with the Wonderful Company, students will gain industry experiences such as career-based workshops, industry job shadowing and mentorships, as well as the opportunity to take part in a paid internship during the senior year. Not only does the WACP pathway focus on career readiness but the goal is to also make students college-ready. Not only will students taking college courses during high school, they will also attend a variety of college tours and presentations. The WACP pathway program can give students a competitive edge when applying for 4-year universities and can also give them an advantage in obtaining an industry job out of high school.

Wonderful Ag Prep

- College and Life Management
- Computer Applications
- Contemporary Health Issues
- Fitness Walking
- General Fitness
- Art Appreciation
- History of the US
- Spanish
- Public Speaking
- Reading and Composition
- American Government
- Elementary Statistics
- Soils

CAREERS

Welder
Equipment Operator
Equipment Fabricator
Machinist
Service Technician



Ag Mechanics Certification

- Ag Mechanics
- Ag Welding
- Small Engines
- Electrics/Hydraulics
- Machine Technology
- Fabrication



Director: Steve Rizzo ~ steve.rizzo@wusd.ws



Agriculture & Natural Resources Agricultural Mechanics

Students trained in the Agricultural Mechanics Pathway will develop an overview of basic design functions, operations and applications. Students successfully completing the program requirements will be able to properly use welding hand tools, power tools, and measuring devices in a manner consistent with industry requirements. Students will be able to perform welding procedures to include inspecting, diagnosing correctly, and performing many types of welds, including SMAW, MIG Welding, TIG welding and computer operated plasma cutters. Our program uses FFA competitions and events as an extension of the classroom. The welding industry is rapidly becoming more dependent on the computers and robotic welders. It is recommended that students develop the

Ag Mechanics

Ag Mechanics 1

Ag Mechanics 2

Ag Mechanics 3
Welding and
Fabrication

ROP Welding
Processes and
Fabrication



CAREERS

Under Water Welding
Welding Educator
Welding Inspector
Pipefitter
Iron Worker
Metal Fabricator



Instructor: Manuel Torres ~ manuel.torres@wusd.ws



Agriculture & Natural Resources

Floral Design

The agriculture and natural resources sector is designed to provide a foundation in agriculture for all agriculture students in California. Students engage in an instructional program that integrates academic and technical preparation and focuses on career awareness, career exploration, and skill preparation. This pathway emphasizes real-world occupationally relevant experiences of significant scope and depth in Floral Design. Integral components of classroom and laboratory instruction, supervised agricultural experience projects, and leadership and interpersonal skills development prepare students for continued training, advanced educational opportunities, or entry to a career.

Floral Design

Floral Design 1

Floral Design 2

Floral Design 3

ROP Floral Design



CAREERS

Florist

Floral Designer

Nursery Manager

Greenhouse Manager



Instructor: Amy Vivenzi ~ amy.vivenzi@wusd.ws



Education, Child Development, & Family Services

The Education, Child Development, and Family Services sector provides students with the academic and technical preparation to pursue high-skill, high-demand careers in these related and growing industries. The sector encompasses one distinct career pathway: Education. The education pathway emphasizes the preparation of students to become teachers. The standards are designed to integrate academic and career technical concepts. The knowledge and skills are acquired within a sequential, standards-based pathway program that integrates hands-on projects, work-based instruction, and leadership development. Standards in the Education, Child Development, and Family Services sector are designed to prepare students for technical training, postsecondary education, and entry to a career.

Education

Careers in
Education

Children's
Literature

Contemporary
Issues in
Education

Foundations of
an Educator



CAREERS

Primary/Secondary School Teacher
School Counselor
Educational Administrator
Speech Therapist

Instructor: Kyle Lazarus ~ kyle.lazarus@wusd.ws



Building & Construction Trades

The building and construction trades sector focuses on providing a foundation in construction trades to secondary students. This sector is home to one distinct pathway: Construction. In this pathway, students will focus on developing practical skills relating to construction, electrical, plumbing, carpentry, masonry, and more. The courses offered in this pathway are hands-on, project and work-based instruction. Also, the classes are aligned with the National FFA Organization, which gives students the unique opportunity to compete with other students across the state in skills-based contests. Standards included in the building and construction trades sector are designed to prepare students for technical training, post-secondary education and entry into a career.

Residential & Commercial Construction

Introduction to Carpentry

Beginning Residential Construction

Advanced Residential Construction

Residential Layout and Commercial Construction

CAREERS

Plumber

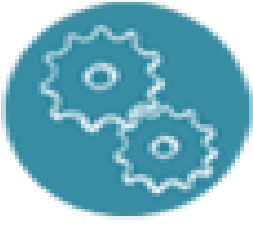
Electrician

Building Inspector Estimator

Carpenter



Instructor: Joseph Garibaldi ~ joseph.garibaldi@wusd.ws

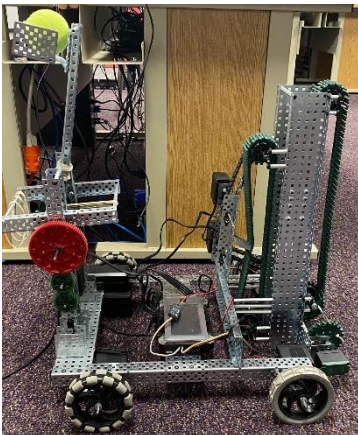


Applied Robotics

The field of robotics is a rapidly growing sector within our economy. The Applied Robotics pathway will give students a hands on opportunity to design, build and program robots. Students will construct robots using the Vex Robotics System. The skills gained by students will allow them to compete in Vex Robotics Competitions, a series of tournaments which lead to the international Vex Worlds Tournament.

CAREERS

Robotics Engineer
Mechanical Engineer
Robotics Technician
Software Developer
Robotics Operator



Applied Robotics

Introduction to Robotics

Robotic Design and
Programming

Competition Robotics 1

Competition Robotics 2



Instructor: Jason Archuleta ~ jason.archuleta@wusd.ws



Digital Media Production

This pathway focuses on learning the skills and obtaining knowledge for creating, refining, and sharing work in the Arts, Media, and Entertainment industry sector. It promotes teamwork, communication, creative thinking, and decision-making abilities and traits that are necessary to function successfully in the competitive and media-rich twenty-first century. Through the manipulation of sight, sound, and motion, those choosing a pathway from this sector reach out in unique ways to enhance the quality of life for those around them.

Digital Media Production

Computer
Literacy

Media Arts

Multimedia

ROP Media
Arts



CAREERS

Film Production
Television Production
Graphic Design
Photographer
Web Designer
Video Technician



Instructor: Juan Gomez ~ juan.gomez@wusd.ws



Business & Finance

Persons trained in fields such as business management, international trade, and various financial services specialties (e.g., accounting, banking, and investing) will find that their skills are highly marketable. Students master basic business principles and procedures before proceeding to the career path specializations. The specializations emphasize concepts of accounting and finance, including computer applications, taxes, investments, and asset management, as well as pathways in international business and business management. Because almost every business and organization has a financial and management component, students will find that opportunities exist in many career paths in addition to those in business and finance.

Business Management

Introduction to Business

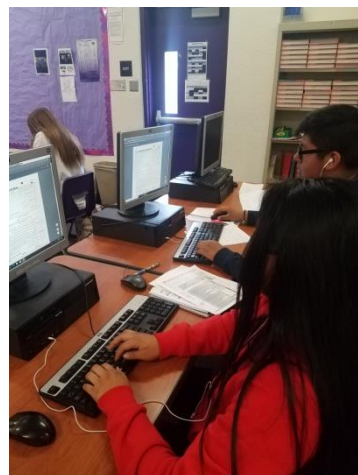
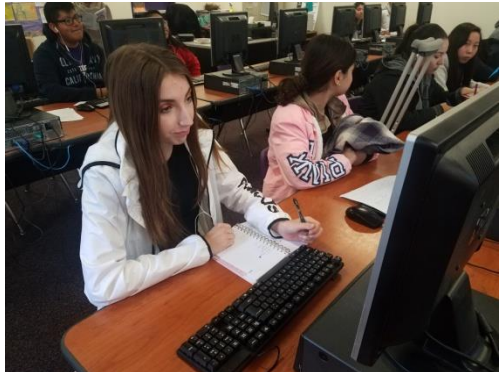
Management & Marketing

Accounting & Finance

Entrepreneurship

CAREERS

Business Advisor
Accountant
Banker



Instructor: Calina Pon ~ calina.pon@wusd.ws



AC² (Athletics Career & College Ready)

The mission of the AC² Academy is to capitalize on the key personal characteristics of an athlete that are essential to success in college, career, and life, to develop each individual into a high performing college and career professional.

AC²

Coaching
Character

Coaching
Leadership

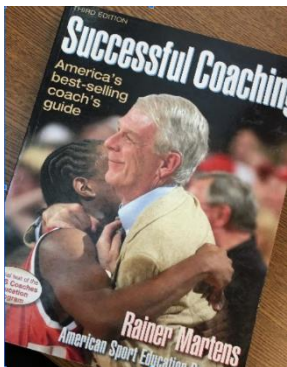
Coaching
Philosophy

Program
Development



CAREERS

Coach
(College, High School, Pop Warner)
Teacher
Athletic Director
Sports Marketing
Sports Agent
Sporting Event Coordinator

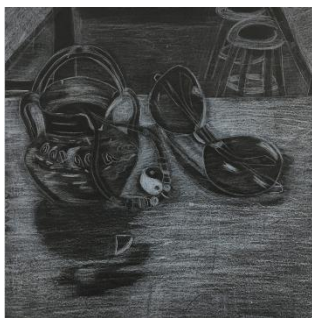


Instructor: Jordan Keener ~ jordan.keener@wusd



Illustration Pathway

Learning the skills and knowledge for creating, refining, and sharing work in the Arts, Media, and Entertainment industry sector promotes teamwork, communication, creative thinking, and decision-making abilities—traits that are necessary to function successfully in the competitive and media-rich twenty-first century. Through the manipulation of sight, sound, and motion, those choosing a pathway from this sector reach out in unique ways to enhance the quality of life for those around them.



Illustration

Intro to 2D
Design

Advanced
Explorations
into 2D Design

AP Art Studio

ROP Portfolio
Development

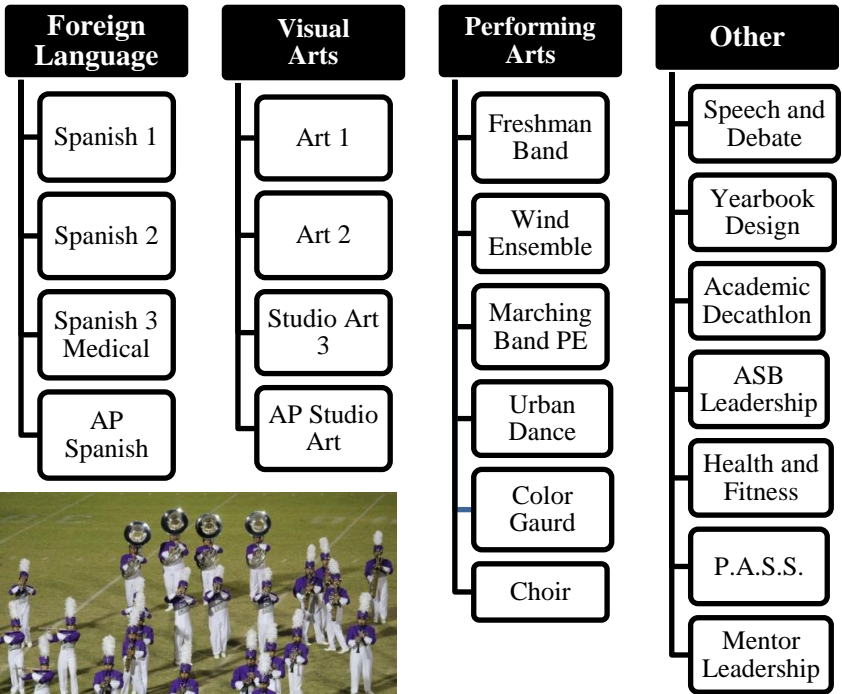
CAREERS

Illustration Artist, Art Director, Art Educator, Biomedical Illustrator, Book Cover Illustrator, Botanical Illustrator, Character Development Artist, Comic Book Illustrator, Costume Designer, Editorial Cartoonist, Graphic Novel Artist/Writer, Greeting Card Illustrator

Instructor: Erin Webster ~ erin.webster@wusd.ws

General Electives

The General Elective Category is all WUHS approved electives that can be taken by any student regardless of Career Pathway choice. The General Elective selections are non-career pathway courses or career pathway courses that meet WUHS graduation or A-G/CSU entrance requirements.



Washington Union High School

6041 S Elm Ave Fresno CA 93706

Phone: (559) 495-5680

Fax: (559) 495-5659

Main Office

Principal <i>jsherron@wusd.ws</i>	John Sherron 495-5681
WUHS Registrar <i>flarios@wusd.ws</i>	Fanny Larios 495-5693
Athletic Director <i>jeff.freitas@wusd.ws</i>	Jeff Freitas 495-5692
Athletic/Activities Secretary <i>diana.chavez@wusd.ws</i>	Diana Chavez 495-5686

Lincoln Prep Academy

Learning Director <i>jhetherington@wusd.ws</i>	John Hetherington 495-5687
Guidance Learning Specialist <i>larry.chang@wusd.ws</i>	Larry Chang 495-5678
Guidance Learning Specialist <i>erika.ohanis@wusd.ws</i>	Erika Ohanis 495-5698

Larry Chang

Building & Construction
Robotics
Health Institute

Erika Ohanis

Digital Media Production
Illustration Pathway
Law & Justice

Elm Prep Academy

CTE/WACP Director <i>srizzo@wusd.ws</i>	Steve Rizzo 495-5689
Guidance Learning Specialist <i>mike.toste@wusd.ws</i>	Mike Toste 495-5694
Guidance Learning Specialist <i>pvillalobos@wusd.ws</i>	Priscilla Villalobos 495-5697

Mike Toste

AC2
Business & Finance
Ed., Child Dev & Family Svcs.

Priscilla Villalobos

Ag Mechanics
Floral Design
Wonderful Ag Prep

To stay up to date with all campus events and information,

PLEASE FOLLOW US ON SOCIAL MEDIA

Washington Union High School

Official WUHS information & updates

FACEBOOK: *Washington Union High School*
[Facebook.com/goWUHSPanthers](https://www.facebook.com/goWUHSPanthers)

WUHS ASB (Associated Student Body)

Student body information, virtual spirit events, campus culture, etc.

FACEBOOK: *Washington Union ASB*
[Facebook.com/wuhsASB](https://www.facebook.com/wuhsASB)

INSTAGRAM

SNAPCHAT *@wuhsasb*

TIK TOK

TWITTER *@wuhsasb1*

COVID-19 may change the way we communicate and interact, but we will remain a connected Panther family!



Student Learner Outcomes

**Washington Union High School
students are ACEs:**

Academically Successful

**Responsible
Citizens**

**Part of an
Engaged Campus**



Washington Union High School

IN ORDER TO ACHIEVE
SUCCESS

BE WILLING AND ABLE TO:

LEARN

ADAPT

PERSEVERE

WHERE
great
FUTURES
begin

**PANTHER
CHAMPION SPIRIT**